


OCXO (Oven Controlled Crystal Oscillators) OC14T5C, OC14T5I Stratum 3, OC14T5GC, OC14T5GI (RoHS version)	+5.0 V HCMOS Square		MERCURY Since 1973
-------------------------------------------------------------------------------------------------------------------------------------	--------------------------------------	-------------------------------------------------------------------------------------	------------------------------

- For high stability Stratum 3 applications requiring low jitter and tight stability. ± 4.6 ppm overall frequency tolerance over 15 years
- +5.0 V D.C supply Voltage
- 15 pF load HCMOS square wave output
- Full size 4 pin DIP full metal package




RoHS Compliant Product
by Mercury

General Specifications (10 MHz at +25°C, at +5.0 V Vcc and Vcon=0.0V)

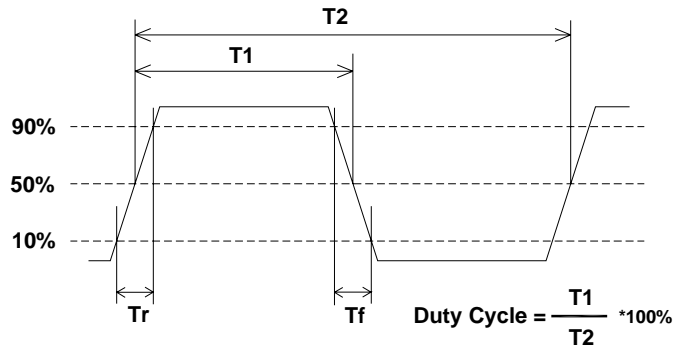
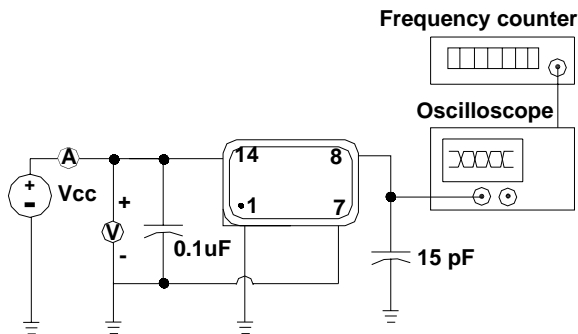
Output Wave Form	HCMOS Square Wave. Wave form code is "T"					
Operating Temperature Range:	Commercial: "C", 0°C to +70°C			Industrial, "I" -40°C to +85°C		
Models	OC14T5C			OC14T5I		
	OC14T5GC RoHS compliant			OC14T5GI RoHS compliant		
Frequency Range	1.25 MHz ~40.0 MHz.					
Supply Voltage (Vcc)	+5.0 V ± 0.2 V (voltage code is "5")					
Initial Calibration Tolerance	± 1.0 ppm max. at time of shipment.					
Total Frequency Tolerance	± 4.6 ppm max. Inclusive of calibration, frequency stability over operating temperature range, supply voltage change, load change, shock, vibration and aging over 15 years. ± 0.28 ppm max. Holdover stability during 24 hours inclusive of supply voltage change, load change and temperature variation.					
Aging	± 30 ppb max. /day; ± 2.5 ppm max over 15 years.					
Warm-up time (at +25°C)	3 minutes max. Within ± 0.1 ppm of its reference frequency.					
Voltage Control on pin 1 (EFC) (Electronics Frequency Tuning)	Not applicable. Pin 1 must be connected to ground.					
Power	Power Dissipation (at +25°C) 1.5 Watts max. at steady-state. 2.5 Watts max. at turn-on.					
Output	Load (Fan Out)		10 LS or 47 pF max.			
	Duty Cycle (measured at 1/2Vcc)		50% $\pm 5\%$			
	Output Voltage Logic High (V_{OH})		+4.5 V min			
	Output Voltage Logic Low (V_{OL})		+0.4 V max.			
	Rise and Fall Time		7 nS max. (measured at 20% \rightleftharpoons 80% of waveform.)			
	Phase Noise	Offset	1 Hz	10 Hz	100 Hz	1 KHz
10 MHz at static condition		-70 dBc	-100 dBc	-130 dBc	-140 dBc	-145 dBc
Storage Temperature		-65°C to +125°C				
Shock		2000 G's, 0.3 ms ½ sine				
Vibration		10 to 2000 Hz / 10 G's				

MERCURY www.mercury-crystal.com

Taiwan: TEL (886)-2-2406-2779, FAX (886)-2-2496-0769, e-mail: sales-tw@mercury-crystal.com
 U.S.A.: TEL (1)-909-466-0427, FAX (1)-909-466-0762, e-mail: sales-us@mercury-crystal.com

OCXO (Oven Controlled Crystal Oscillators) OC14T5C, OC14T5I Stratum 3, OC14T5GC, OC14T5GI(RoHS version)	+5.0 V HCMOS Square		MERCURY Since 1973
-----------------------------------------------------------------------------------------------------------------------------------------	--------------------------------------	-------------------------------------------------------------------------------------	------------------------------

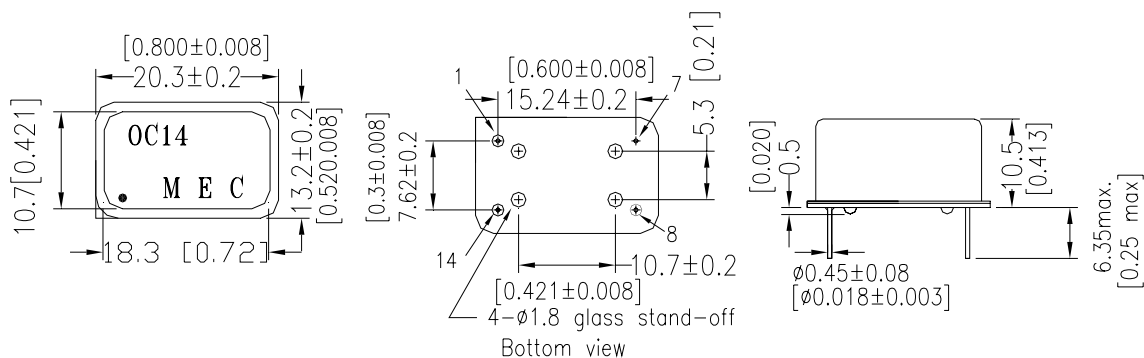
OC14T5C/I Test Circuit:



OC14T5C/I Package Dimensions and Pin Connections:

Pin 1: Ground Pin 7: Ground / Case
 Pin 8: RF Output Pin 14: Supply Voltage

unit mm [inches]
 Square corner is pin No. 1



Part Number Format and Example:

Example: OC14T5GC-10.000								
OC	14	T	5	G	C	—	10.000	
①	②	③	④	⑤	⑥	dash	⑦	
<p>①: "OC" Product Prefix for OCXO ②: Package type. "14" for 4 pin DIP.</p> <p>③: Output wave form code. "T" for HCMOS square wave.</p> <p>④: Supply voltage code. "5" for +5.0 V;</p> <p>⑤: "G" for RoHS compliant equivalent, " " (blank) for non-RoHS part.</p> <p>⑥: "C" for Stratum 3 over 0°C to +70°C ; "I" for Stratum 3 over -40°C to +85°C</p> <p>⑦: Frequency in MHz;</p>								